

Oek Mwe Insewowo Lom

Kahlem ♩ = 80-96



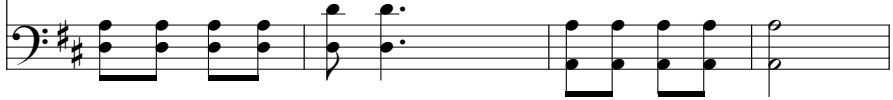
1. Ke moul lom fwac - luh kom e - is ma up - pa,
 2. Kuh kom oac - na na - na - la ke to asr lom?
 3. Ke li - ye mwet sah - yac suc oasr acn ac gold,
 4. In - masr - lo - wos a - mai fwine - yohk kuh srik,



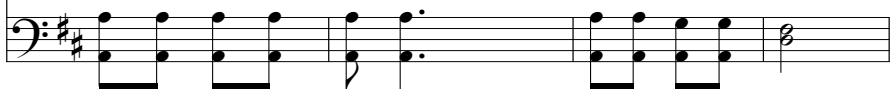
Nuhn-kuh mac nuh - ke - wa tu - la in moul lasr,
 Kuh ya sak - sin to - asr pahng nuh sum in wis?
 Nuhn-kuh mu Kraist o - le - la kah - srup nu - sum.
 Nik mwet kom ful - e - ak God el fwah wi kom.



Oek mwe in - se - wo - wo; oek ka - is si - e,
 Oek mwe in - se - wo - wo; losr fwah som li - ki,
 Oek mwe in - se - wo - wo; ma - ni tiac mo - li,
 Oek mwe in - se - wo - wo; lih - pu - facn wi kom,



Ac kom tu - fa lut ke mac Leum el o - ruh.
 Ac kom fwal a - lul - lul ke len nuh - ke len.
 In - se - wo lom in - kuh - srao yen mwo sum lung.
 Ku - sen ak - mwo fwah kol kom nuh - ke saf - lah.



Oek mwe in - se wo; Ka - is si - e.
 Oek mwe in - se - wo - wo; Oek ka - is si - e.

Oek mwe in - se - wo; Mac God o - ruh.
 Oek mwe in - se - wo - wo; L'ye mac God o - ruh.

Oek in - se - wo;
 Oek mwe in - se - wo - wo; Fwak ka - is si - e.

Oek mwe in - se - wo; Li - ye mac God o - ruh.

Sifwen kahs: Johnson Oatman, Jr. 1856–1922
Ohn: Edwin O. Excell, 1851–1921

Doctrine and Covenants 78:17–19
 Alma 34:38